



Online Monitoring

- Increase Efficiency
- Improve Service
- Successful Pilot Plants

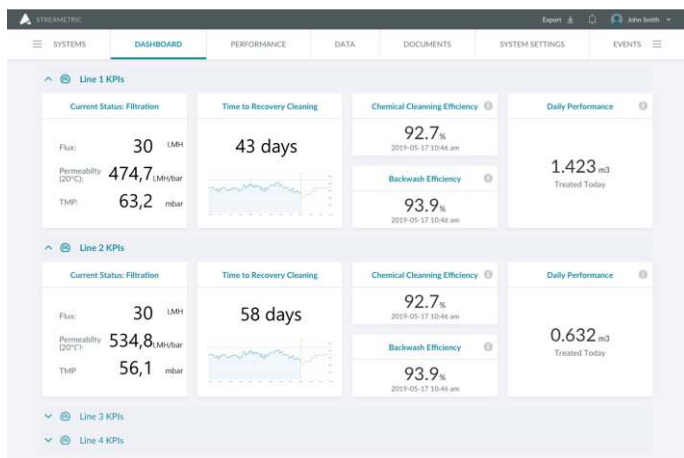
Modern water and wastewater treatment plants generate an abundance of data. STREAMETRIC's advanced online monitoring platform helps operators, system integrators, and manufacturers leverage this data to drive improvements. With STREAMETRIC, users can access relevant information and analytics in an easy-to-use web portal with just a few clicks of a mouse.

The STREAMETRIC cloud is secure and scalable. This makes it ideal for versatile use whether processing large or small amounts of data.

Features

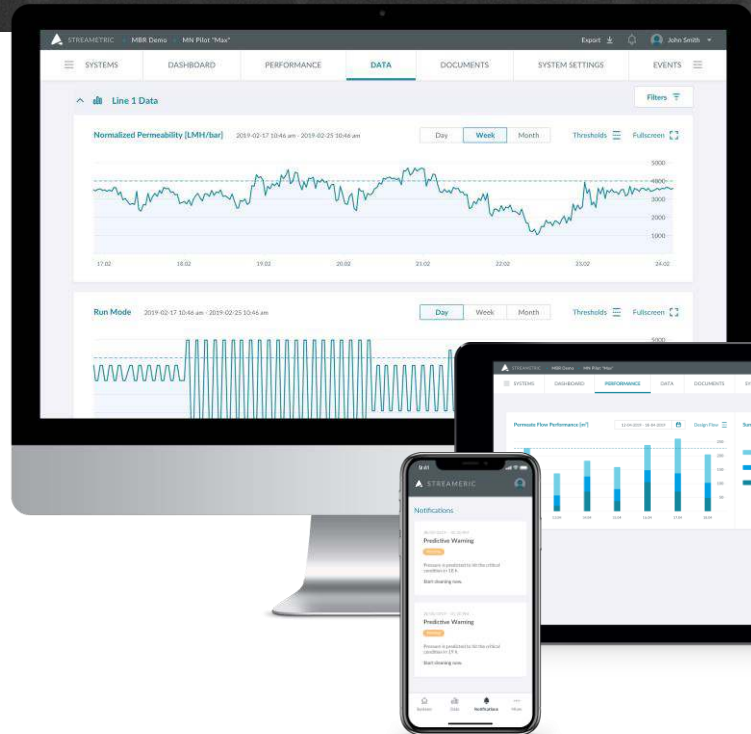
Dashboard

The interactive STREAMETRIC dashboard presents important information at a glance. This overview allows you to assess the condition of each asset quickly, based on live values, key performance indicators, and analytics.



Membrane Analytics

For all common membrane systems (MBR, RO, MF, UF, NF), STREAMETRIC can automatically calculate key figures such as flux, permeability, fouling rate, and cleaning efficiencies.

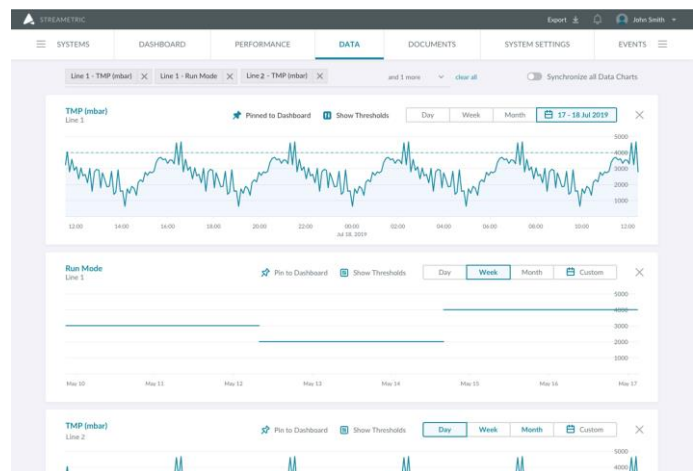


Cleaning Optimization

STREAMETRIC's artificial intelligence (AI) module is equipped with a live permeability prediction. This allows better scheduling of cleanings and helps determine the cleaning demand based on live and historic conditions. The STREAMETRIC AI is an additional module and currently available for selected membrane systems.

Graphs

With the STREAMETRIC graph feature, you can simply view and compare all your data online without having to export and manually process it.



Presenting entire weeks or months of multiple graphs gives a good overall picture. In addition, process details become directly visible with the simple zoom function via a click of the mouse.

Alarms & Notifications



Monitoring data can be a full-time job. The alarm and notification function of STREAMETRIC helps simplify the work. You can set custom warning limits and you'll be automatically alerted when values are outside the specified range. Thus, you can be warned before a negative trend becomes a real problem. Depending on your preferences, you can choose to be notified by e-mail, SMS, or simply in the web portal.

Data Export

STREAMETRIC stores and manages all your data for you. However, you can always export your data to a .csv for further analysis or sharing.

Remote Access

The STREAMETRIC gateway allows you to access your PLC remotely via secure VPN connection for maintenance, troubleshooting, or software updates.

Status Report

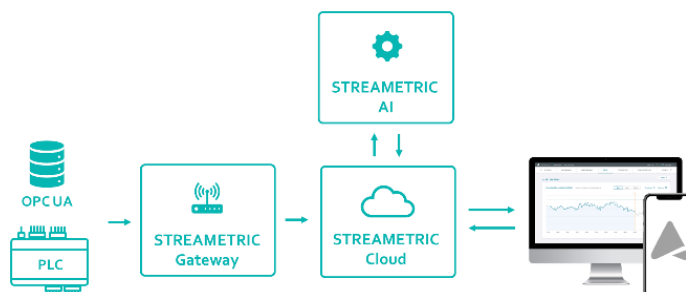
As an optional, additional package, STREAMETRIC offers a regular overview of relevant process parameters. The analyses are shared in a PDF status report, so the results can be easily shared across your organization.

Logs

Even today, some data is still measured offline by operators. With STREAMETRIC you can log measurement results, sample data, and cleaning details. In this way, you can access all relevant data on one platform.

Installation & Configuration

Using the program is simple. To connect a system to STREAMETRIC, a gateway is connected to the PLC (controller) of the system or a local OPC UA server. No new sensor technology needs to be installed. The gateway is compatible with all common PLC types and can communicate with the STREAMETRIC Cloud via mobile, Internet, Wi-Fi, and Ethernet.



Our experts will support you with the interface definition and a trouble-free installation, remotely or on-site. Once the system is connected, users can access the portal on all devices with a web browser. STREAMETRIC is a software-as-a-service. This means regular service and updates are available after installation.

About STREAMETRIC

STREAMETRIC is a corporate startup of MICRODYN-NADIR, a global specialist in membrane products, and its parent company, MANN+HUMMEL, a leading manufacturer of filtration solutions. STREAMETRIC combines the +50 years of experience in membrane technology with expertise in digital solutions based on Internet of Things (IoT) and AI.

Do you want to learn more? Ask our experts how you can use STREAMETRIC for your plant. Contact us at info@streametric.io or visit www.streametric.io.

